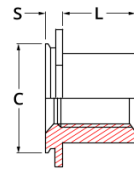
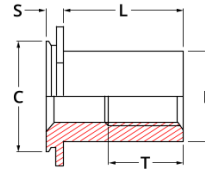


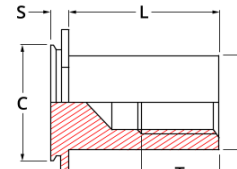
Self Clinch Concealed Head Standoffs



Style 1
(Fully Threaded)



Style 2
(Partial Threaded)



Style 3
(Blind Hole)



Self Clinch Concealed Head Standoffs										
Thread Size	Type	Minimum Sheet Thickness	S Max.	C Max.	D Max.	E Nominal	T Min.	Blind Hole Diameter +0.08/-0.0	Min. Blind Hole Depth	Minimum CL To Edge Of Panel
M3 x 0.5	NCSO	1.60	1.04	5.39	4.2	6.35	5.00	5.41	1.10	4.80
	NCS	2.40	1.83						1.91	
M4 x 0.7	NCSO	1.60	1.04	7.9	6.23	8.74	6.50	7.92	1.10	6.40
	NCS	2.40	1.83						1.91	
M5 x 0.8	NCSO	1.60	1.04	8.72	7.37	9.53	9.60	8.74	1.10	7.20
	NCS	2.40	1.83						1.91	
M6 x 1.0	NCS	2.40	1.83	9.89	8.89	11.11	9.60	9.90	1.91	9.50

Thread Size	Type	Lengths (L) +0.05 / -0.13 - Style							
		4	6	8	10	12	16	20	25
M3 x 0.5	NCSO	1		2				3	
	NCS	1					3		
M4 x 0.7	NCSO	1		2				3	
	NCS	1		2			3		
M5 x 0.8	NCSO		1			2			3
	NCS		1			2			3
M6 x 1.0	NCS		1			2			3

Material And Finish
 300 Stainless Steel (A2)
 Suitable For Installation Into Ductile Panels
 With A Maximum Recommended Hardness
 Of 70 HRB

Ordering Examples:
 NCSO-M3-10mm Long-1.60 Minimum Panel-A2
 Self Clinching Concealed Head Standoff
 NCS-M4-10-2.40 Minimum Panel-A2
 Self Clinching Concealed Head Standoff